

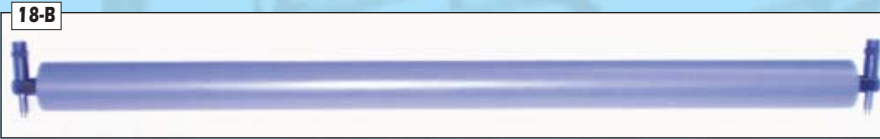
# Alcolor Ink Bridge Intermediate "Y" Rollers

**GTO52**



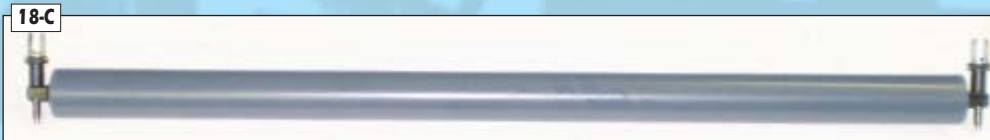
#89.030.570F

**MO Offset**



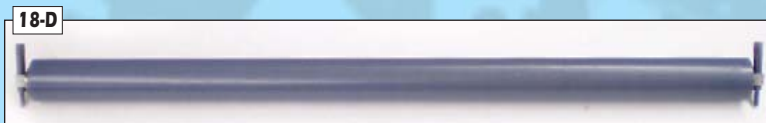
#63.030.570F

**SM74**



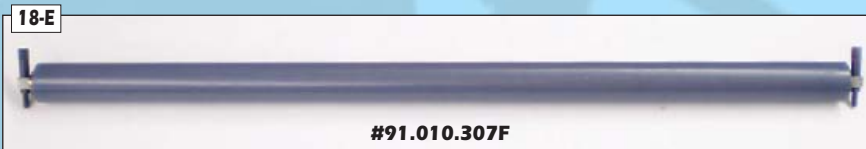
#M2.030.570F

**72 Speedmaster**



#93.010.207F

**Early 102 Speedmaster**



#91.010.307F

(Body: 40 11/16 - 1030mm) (Shaft: 42 9/16 - 1082mm) (Diameter 2 1/8 - 53mm)

**Early 102**



**Later 102 Speedmaster**



#71.010.317F

(Body: 40 11/16 - 1030mm) (Shaft: 43 3/16 - 1096mm) (Diameter 2 1/8 - 53mm)

**Later 102**

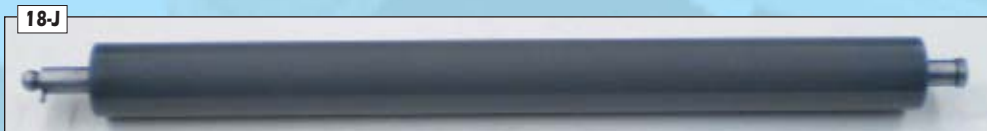


**S-Offset**

SORD SORDZ Call  
SORM SORMZ Call  
SORS SORSZ Call



**SM52**



#G2.030.330F

**Bushing w/screw complete**



(same O.S. & D.S.)  
72/102/S-Offset  
#91.010.327F

**Bushing End Block**



(same O.S. & D.S.)  
GTO/MO  
#MV.032.569

**Locking Sleeve O.S. / D.S.  
GTO/MO**



#63.030.572F and #63.030.573  
and #63.030.577

**GTO52**



20mm #00.520.1613  
25mm Call  
35mm Call



Visa



MasterCard

Call Demers Parts Hotline @ 1-800-956-3612 ■ 727-372-1200