

Ink Unit Rubber Washup Blades-A

10x15



Tiegol - Platen 10x15 (26x38cm)
#T06105F (380mm long) 5 Slots



Tiegol - Platen 13x18 (32x46cm)
#GT06105F (470mm long) 6 Slots

TOK / TOM

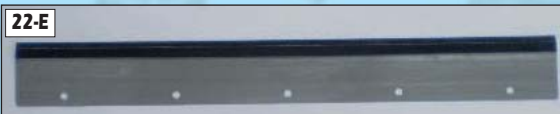


TOK / TOM AKA: Hickey Wiper
#22.204.003 (285mm long) 4 Holes



Quickmaster AKA: Hickey Wiper
#A1.023.006 (376mm long) 5 Slots

GTO46



GTO46
#GTO10180 (504mm long) 5 Holes



GTO46 Numbering Unit
#69.431.230F

GTO52

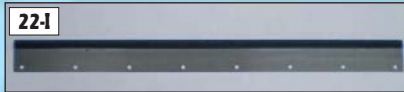


GTO52
#69.010.180 (565mm long) 6 Holes



GTO52 Numbering Unit
#69.431.230F 508mm long

MO



#58.010.180
8 Holes - 710mm long



MO-Offset Blanket Wash #53.205.033
7 Holes - 690mm long



MO-Offset Numbering Unit #43.431.230F
648mm long

Early 72 Speed



72 Speedmaster #68.010.018
11 Holes or Slots - 790mm long



72 Speedmaster Blanket Wash Up #68.010.180
790mm

Early 102 Speedmasters



Early 102 Speedmaster #41.010.180
11 Holes - 1,090mm long

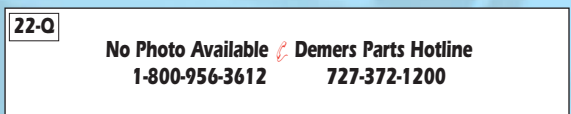


Blanket Washer #41.010.180
11 Holes - 1,090mm long

Later 102 Speedmasters



Ink Washup + Automated Ink Washup #41.010.180
11 Holes 1,090 mm long



No Photo Available Demers Parts Hotline
1-800-956-3612 727-372-1200

Blanket Washer #81.205.123

102CD



Call



Visa

MasterCard

Call Demers Parts Hotline @ 1-800-956-3612 ■ 727-372-1200

Ink Unit Washup Blades - B

Printmaster



#69.010.180 565mm long - 6 Hole

SM52



#G2.010.502 Ink Unit - 605mm long - 7 Holes



No Photo Available ☞ Demers Parts Hotline
1-800-956-3612 727-372-1200

#G2.431.193 Numbering Unit - 534mm long

SM74



#M2.010.403 Short Blade (820mm long)



No Photo Available ☞ Demers Parts Hotline
1-800-956-3612 727-372-1200

Need s/n range Long Blade (826mm long)

S-Offset



SORK + SORKZ #58.010.180 720mm long - 8 Holes



SORM/Z #68.010.180
54mm x 740mm x 0.5mm (flexible) - 11 Holes (9+2)



SOR + SORZ #66.010.180 (890mm long)



SORD + SORDZ #76.010.180
60mm x 960mm x 0.5mm (flexible) - 10 Holes



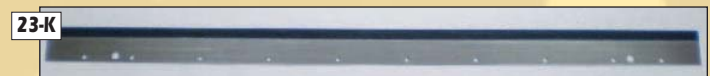
SORS + SORSZ #41.010.180
1,090mm x 0.5mm (flexible) - 11 Holes



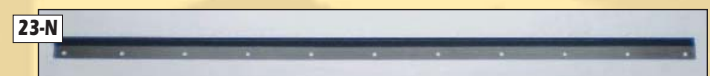
SORM + SORMZ Call
38mm x 754mm x 0.5mm - #1 Unit @ Feeder side - 9 Holes



SORM + SORMZ Call
54mm x 790mm x 2.0mm (rigid) - 12 Holes



SORD + SORDK Call
54mm x 960mm x 2.0mm (rigid) - 12 Holes (10+2)



SORS + SORSZ #41.010.180 and #76.010.180
(#1 Unit at Feeder Side)

Web 8



No Photo Available ☞ Demers Parts Hotline
1-800-956-3612 727-372-1200

Web 8 Call 570mm long



No Photo Available ☞ Demers Parts Hotline
1-800-956-3612 727-372-1200

Rotospeed Call 1,050mm long

K-Offset



K-Offset #KOR10180
52mm x 600mm x 2.0mm (rigid) - 10 Holes



KORA #KORA10180
620mm x 52mm x 2.0mm (rigid) - 10 Holes



KOR62 #KORD6210180
650mm x 52mm x 2.0mm (rigid) - 10 Holes

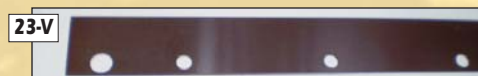


KORD64 #KORD6410180
690mm x 52mm x 2.0mm (rigid) or 0.5mm (flexible) - 12 Holes

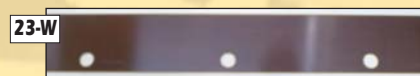


KORS #KORS10180
760mm x 52mm x 2.0mm (rigid) or 0.5mm (flexible) - 12 Holes

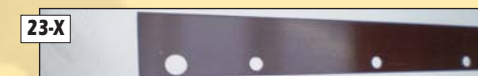
K-Letterpress



KS #KS10180 530mm long



KSB #KSB10180 575mm long



KSBA #KSB10180



KSD #KSD10180



Call Demers Parts Hotline @ 1-800-956-3612 ■ 727-372-1200