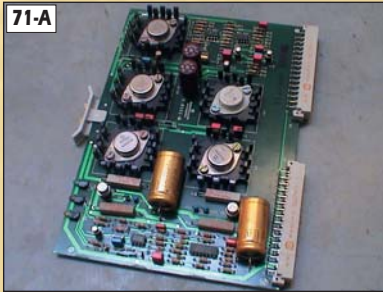
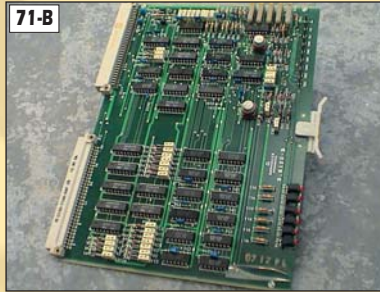


Printed Circuit Boards – Alcolor / Standard

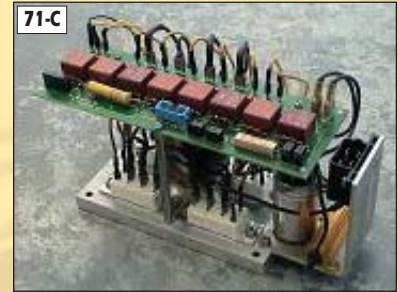
Alcolor PreCpTronic



Power Supply SPV
#91.198.1443



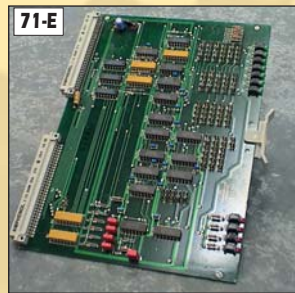
SLO #91.198.1453



Pre CpTronic DC Drive Module
#91.198.1333



Roller Activator WAN
#91.198.1463



Current Regulator SRI
#91.198.1473

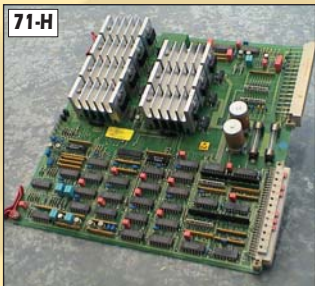


Armature Choke
#00.780.2337
KA 1-6

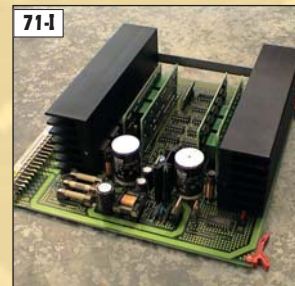


Armature Choke
#00.780.2336
KN 1-6

CpTronic – Alcolor – Standard Dampening



LTK 50 Standard
Power Port 50W Speed Control
#91.144.8021



BLA
#98.198.115s



LTK500 Silver
91.144.8062

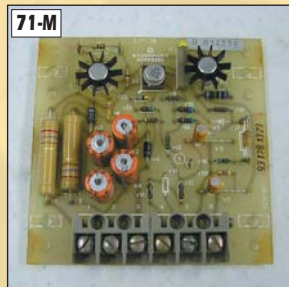


Power Port
91.144.8062
NT85 00.781.2083

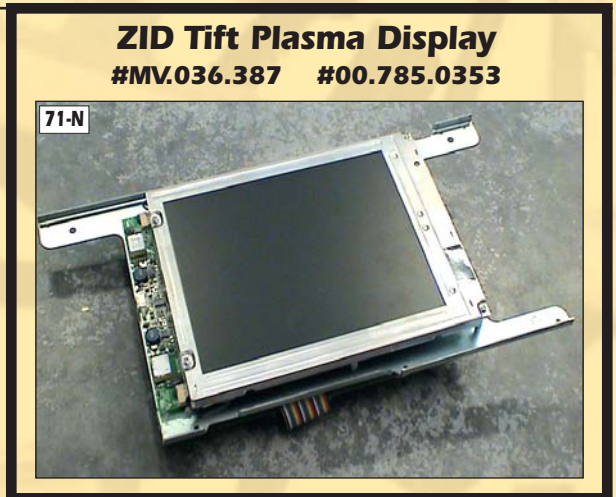
Standard Dampening – PreCpTronic



Conventional THY Early Standard DAMP
#93.178.1333



Early Standard Control Board
#93.178.1323



ZID Tift Plasma Display
#MV.036.387 #00.785.0353



Visa MasterCard

Call Demers Parts Hotline @ 1-800-956-3612 ■ 727-372-1200