

New Bearings  
New Steel Core  
No Exchange

Complete - Ready to Install  
on Ink and Water Rollers

KOR - KORA - KORD62 - KORD64 - KORS

Copyright ©2010

15

# Group 11-B K-Offset

**KOR - 15 3/4 x 22 1/2  
40x57cm**

**11-H KOR**



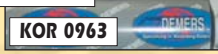
**Ink Roller Set of 9 Rollers  
3 Red, 2 White, 2 Brown, 2 Blue**

**11-I KOR**



**Red  $\phi$ 51  
2.00"**

**11-J KOR**



**White  $\phi$ 53  
2 3/32"**

**11-K KOR**



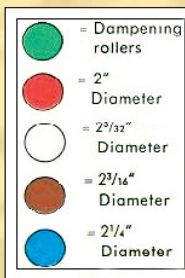
**Brown  $\phi$ 55  
2 3/16"**

**11-L KOR**



**Blue  $\phi$ 57  
2 1/4"**

**K-Offset Roller Scheme**



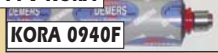
**KORA - 18 x 22 1/2  
46x57cm**

**11-H KORA**



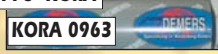
**Ink Roller Set of 9 Rollers  
3 Red, 2 White, 2 Brown, 2 Blue**

**11-I KORA**



**Red  $\phi$ 51  
2.00"**

**11-J KORA**



**White  $\phi$ 53  
2 3/32"**

**11-K KORA**



**Brown  $\phi$ 55  
2 3/16"**

**11-L KORA**



**Blue  $\phi$ 57  
2 1/4"**

**KORA**

**11-R KORA**



**Water Ductor for cloth  
47.6mm  $\phi$**

**11-S KORA**



**Water Form - with Bare back  
51mm  $\phi$**

**11-T KORA**



**Water Form - for 3m sleeve  
50.4mm  $\phi$**

**11-U KORA**



**Water Form - for molleton  
47.6mm  $\phi$**

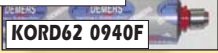
**KORD62 - 18 x 24 1/2  
46x62cm**

**11-H KORD62**



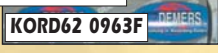
**Ink Roller Set of 9 Rollers  
3 Red, 2 White, 2 Brown, 2 Blue**

**11-I KORD62**



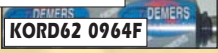
**Red  $\phi$ 51  
2.00"**

**11-J KORD62**



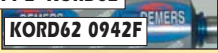
**White  $\phi$ 53  
2 3/32"**

**11-K KORD62**



**Brown  $\phi$ 55  
2 3/16"**

**11-L KORD62**



**Blue  $\phi$ 57  
2 1/4"**

**KORD62**

**11-R KORD62**



**Water Ductor for cloth  
47.6mm  $\phi$**

**11-S KORD62**



**Water Form - with Bare back  
51mm  $\phi$**

**11-T KORD62**



**Water Form - for 3m sleeve  
50.4mm  $\phi$**

**11-U KORD62**



**Water Form - for molleton  
47.6mm  $\phi$**

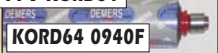
**KORD64 - 18 x 25 1/4  
46x64cm**

**11-H KORD64**



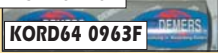
**Ink Roller Set of 9 Rollers  
3 Red, 2 White, 2 Brown, 2 Blue**

**11-I KORD64**



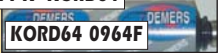
**Red  $\phi$ 51  
2.00"**

**11-J KORD64**



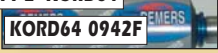
**White  $\phi$ 53  
2 3/32"**

**11-K KORD64**



**Brown  $\phi$ 55  
2 3/16"**

**11-L KORD64**



**Blue  $\phi$ 57  
2 1/4"**

**KORD64**

**11-R KORD64**



**Water Ductor for cloth  
47.6mm  $\phi$**

**11-S KORD64**



**Water Form - with Bare back  
51mm  $\phi$**

**11-T KORD64**



**Water Form - for 3m sleeve  
50.4mm  $\phi$**

**11-U KORD64**



**Water Form - for molleton  
47.6mm  $\phi$**

**KORS - 20 1/2 x 28 3/8  
52x72cm**

**11-H KORS**



**Ink Roller Set of 9 Rollers  
3 Red, 2 White, 2 Brown, 2 Blue**

**11-I KORS**



**Red  $\phi$ 51  
2.00"**

**11-J KORS**



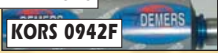
**White  $\phi$ 53  
2 3/32"**

**11-K KORS**



**Brown  $\phi$ 55  
2 3/16"**

**11-L KORS**



**Blue  $\phi$ 57  
2 1/4"**

**KORS**

**11-R KORS**



**Water Ductor for cloth  
47.6mm  $\phi$**

**11-S KORS**



**Water Form - with Bare back  
51mm  $\phi$**

**11-T KORS**



**Water Form - for 3m sleeve  
50.4mm  $\phi$**

**11-U KORS**



**Water Form - for molleton  
47.6mm  $\phi$**

**"WHILE THEY LAST" Many one time available "original manufacture" parts call: 1-800-956-3612**