
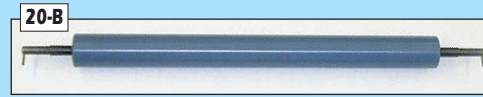


Group 20

Ink Unit – Ryder Roller AKA Distributor Intermediate

GTO46
 #42.009.022F
 #GTO-0922F
 48mm 1 7/8" (dia)

GTO52
 #69.009.022F
 48mm (1 7/8" dia)

SM74

20-C
 Demers Parts Hotline
 1-800-956-3612 1-941-505-PART (7278)
 46mm #M2.009.111 Hooked End

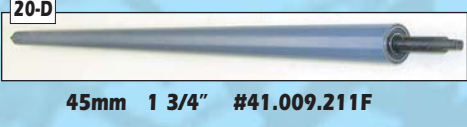
20-H
Thank You For Your Business

SM74

55mm #M2.009.101

102 early

20-I
 68mm 2 11/16" #41.009.200F



102 Speedmaster early

45mm 1 3/4" #41.009.211F

102 early

20-J
 45mm 1 3/4" #41.009.911F

20-K
 Demers Parts Hotline
 1-800-956-3612 1-941-505-PART (7278)
 39mm 1 17/32" #41.009.905F

102 early

MO-Offset

20-E
 39mm 1 17/32" #43.009.911F



MO

54mm 2 1/8" #43.009.022F

MO

20-M
 39mm 1 17/32" #43.009.026F

20-N
Sell Us Your Misc. Rilsan / Teflon Rollers

72 Speedmaster early
 Note: For S/N's > 510.064
 39 mm (dia) #68.009.905F

20-F
 45mm 1 3/4" #68.009.211F



72 early

68mm 2 11/16" #43.009.200F

72 early

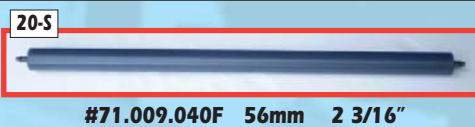
20-P
 45mm 1 3/4" #68.009.911F

20-Q
Core Exchange Program
 39mm 1 17/32" #68.009.905F

72 early

102 later

20-R
 #71.009.052F 56mm 2 3/16"



102 later

#71.009.040F 56mm 2 3/16"

102 later

20-T
 #71.009.201F 68mm 2 11/16"



102 later

#71.009.205F 68mm 2 11/16"

102 later

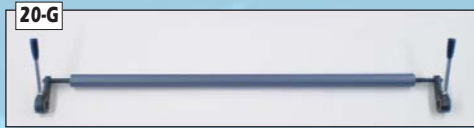
20-V
 #71.009.042F 56mm 2 3/16"



102 later

#71.009.044F 56mm 2 13/16"

SORMZ #73.009.044F
 SORDZ #76.009.055F
 SORSZ #71.009.044F



Ink Applicator Roller Ø56mm 2 3/16"

20-X	S-LINE OFFSET	45mm (1 3/4")	68mm (2 11/16") Unit #2	68mm (2 11/16") Unit #1	68mm (2 11/16")
	SORK or SORKZ	#58.009.211	#58.009.200	#78.009.200	---
	SORM or SORMZ	#68.009.211	#68.009.200	#88.009.200	#73.009.205F
	SOR or SORZ	#66.009.211	#66.009.200	#86.009.200	---
	SORD or SORDZ	#76.009.211	#76.009.200	#96.009.200	#76.009.205F
	SORS or SORSZ	#41.009.211F	#41.009.200	#51.009.200	#71.009.205F



Visa



MasterCard

Call Demers Parts Hotline @ 1-800-956-3612 ■ 1-941-505-PART (7278)